

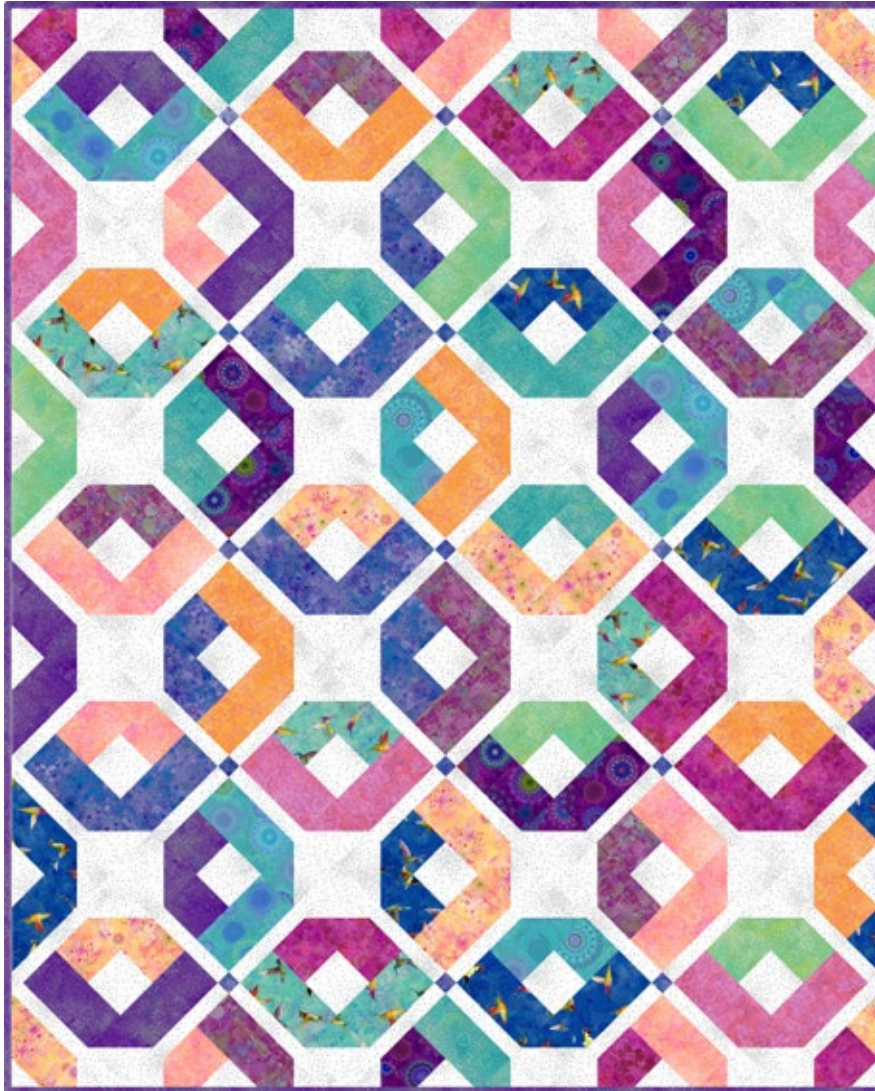
## The Elena Quilt

By Kitchen Table Quilting  
Designed by Erica Jackman  
kitchentablequilting.com  
Lap size shown, 56" x 70"

*Pattern also includes:  
Baby & Twin Sizes*



Fabrics:	1 Kit	10 Kits	20 Kits
14 Fat Quarters:			
Aqua Medallions Y3761-33	1 FQ	1 bolt	1 bolt
Dk Orchid Medallions Y3761-122 (also in backing below*)	1 FQ	1 bolt	1 bolt
Royal Blue Hummingbirds Y3763-31	1 FQ	1 bolt	1 bolt
Turquoise Hummingbirds Y3763-101	1 FQ	1 bolt	1 bolt
Lt Orange Floral Y3765-35	1 FQ	1 bolt	1 bolt
Blue Floral Y3765-90 (incl. Cornerstones)	½ yd	1 bolt	1 bolt
Eggplant Texture Y3766-45	1 FQ	1 bolt	1 bolt
Coral Star Y3767-39	1 FQ	1 bolt	1 bolt
Orange Jacobean Tonal Y3768-36	1 FQ	1 bolt	1 bolt
Raspberry Jacobean Tonal Y3768-74	1 FQ	1 bolt	1 bolt
Dk Fuchsia Leaves Y3769-78	1 FQ	1 bolt	1 bolt
Lt Green Tonal Dot Y3770-20	1 FQ	1 bolt	1 bolt
Aqua Tonal Dot Y3770-33	1 FQ	1 bolt	1 bolt
Dk Orchid Tonal Dot Y3770-122 (incl. binding)	1 yd	1 bolt	2 bolts
Background: Grey LB Basic Confetti Y2663-6	1 ⅞ yds	2 bolts	3 bolts
*Add'l Backing: Dk Orchid Medallions Y3761-122	3 ⅞ yds	3 bolts	5 bolts



# The Elena Quilt

By Kitchen Table Quilting  
 Designed by Erica Jackman  
 kitchentablequilting.com  
 Lap size shown, 56" x 70"



## Fabrics:

14 Fat Quarters:

Aqua Medallions Y3761-33	1 FQ
Dk Orchid Medallions Y3761-122 ( <i>also in backing below*</i> )	1 FQ
Royal Blue Hummingbirds Y3763-31	1 FQ
Turquoise Hummingbirds Y3763-101	1 FQ
Lt Orange Floral Y3765-35	1 FQ
Blue Floral Y3765-90 ( <i>incl. Cornerstones</i> )	½ yd
Eggplant Texture Y3766-45	1 FQ
Coral Star Y3767-39	1 FQ
Orange Jacobean Tonal Y3768-36	1 FQ
Raspberry Jacobean Tonal Y3768-74	1 FQ
Dk Fuchsia Leaves Y3769-78	1 FQ
Lt Green Tonal Dot Y3770-20	1 FQ
Aqua Tonal Dot Y3770-33	1 FQ
Dk Orchid Tonal Dot Y3770-122 ( <i>incl. binding</i> )	1 yd
Suggested Background: Grey LB Basic Confetti Y2663-6	1 ⅞ yds
*Add'l Backing: Dk Orchid Medallions Y3761-122	3 ⅝ yds