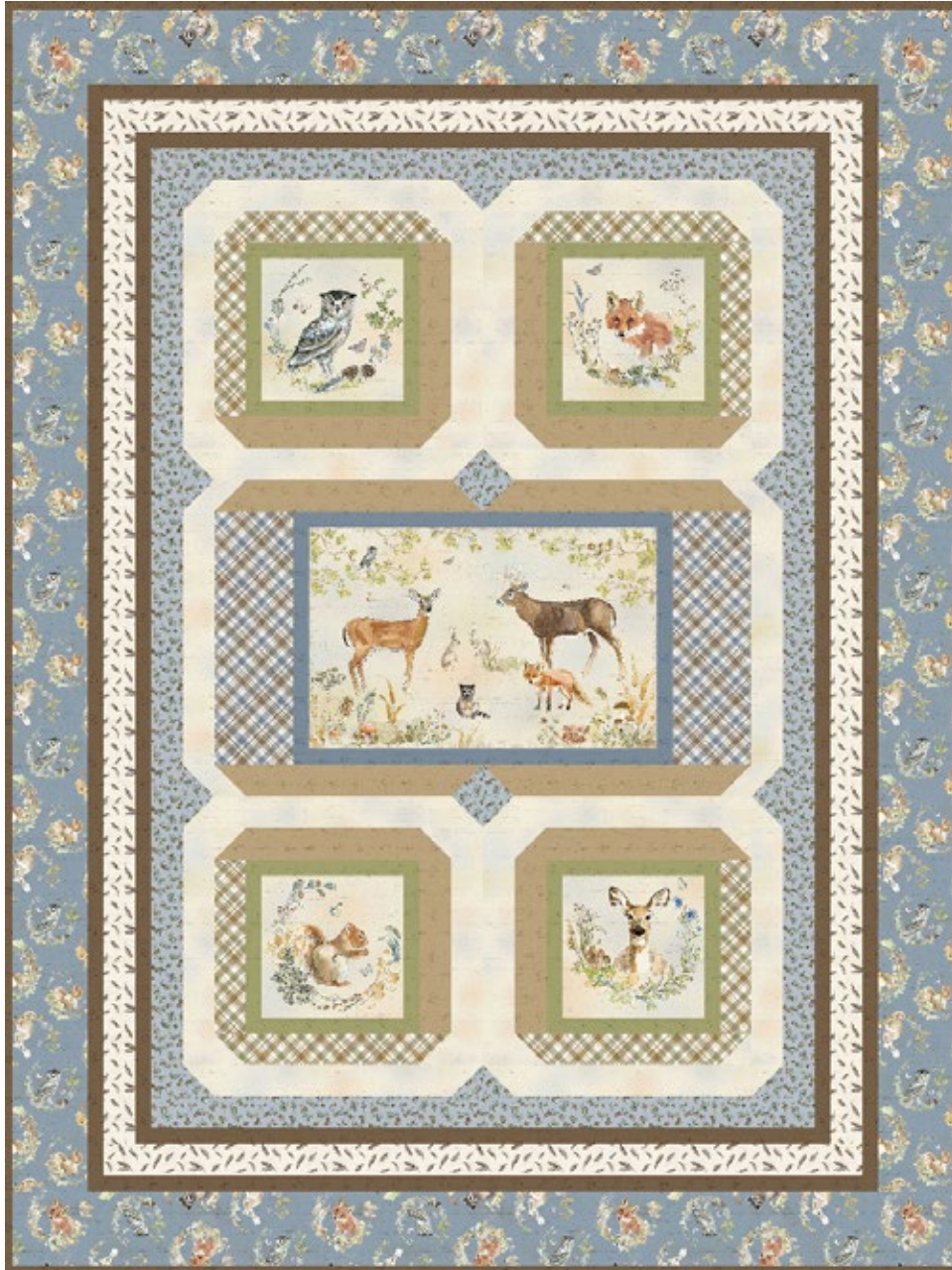


Wildwood

by Beth Grove



NEW!

Wild at Heart

By The Whimsical Workshop
 Designed by Matthew Pridemore
 60" x 80" • Order No. 0991
thewhimsicalworkshop.com

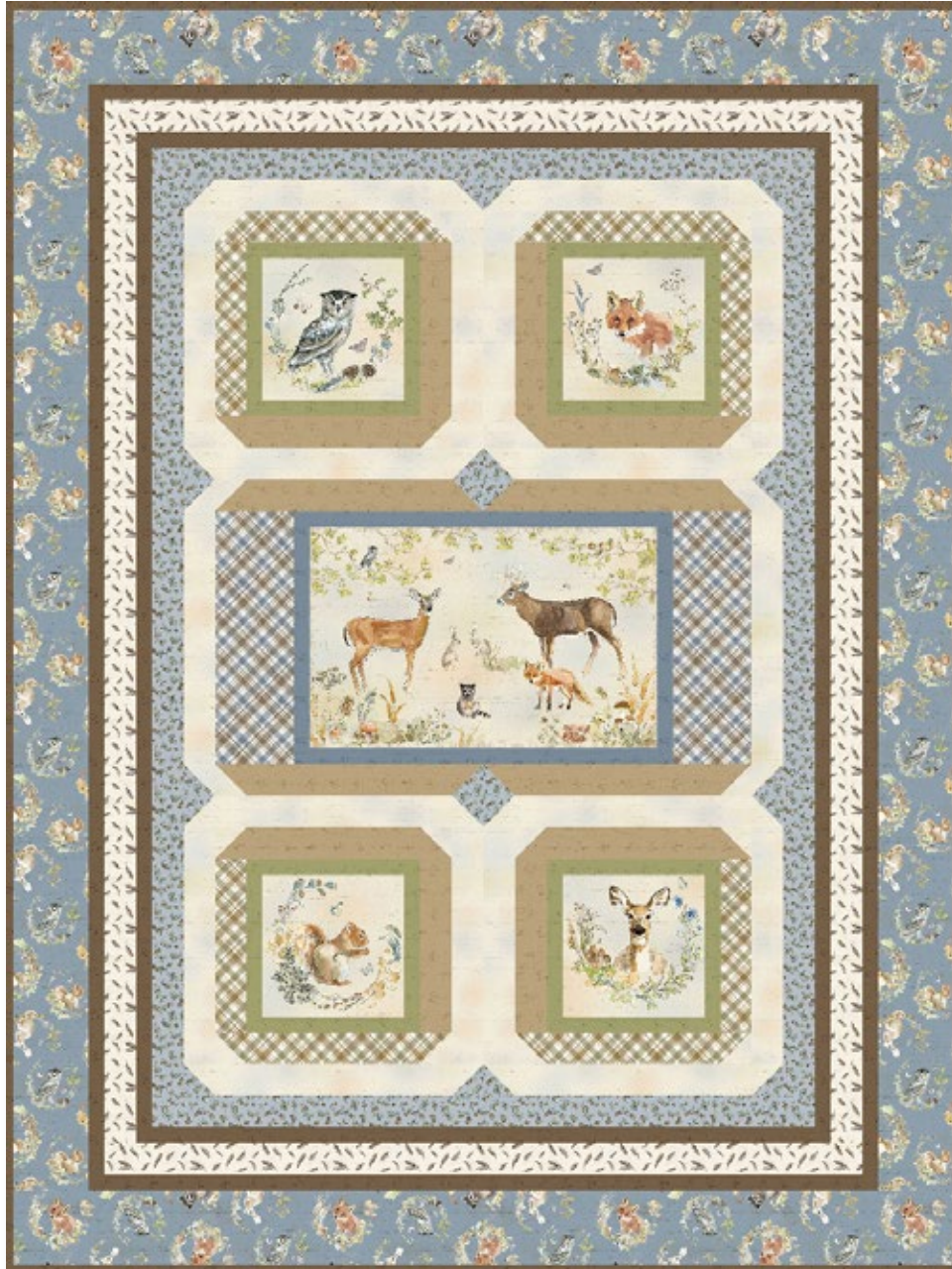


Designed for
 Wildwood!

11 Fabrics	1 Kit	10 Kits	20 Kits
A. 24" Digital Panel Y4369-55	$\frac{2}{3}$ yard	1 bolt	1 bolt
B. Olive Digital Mushroom Tonal Y4376-24	$\frac{3}{8}$ yard	1 bolt	1 bolt
C. Olive Digital Diagonal Plaid Y4372-24	$\frac{3}{8}$ yard	1 bolt	1 bolt
D. Light Caramel Digital Mushroom Tonal Y4376-64	$\frac{1}{2}$ yard	1 bolt	1 bolt
E. Multi Digital Aspen Bark Y4375-55	1 yard	1 bolt	2 bolts
F. Slate Digital Mushroom Tonal Y4376-141	$\frac{1}{4}$ yard	1 bolt	1 bolt
G. Slate Digital Diagonal Plaid Y4372-141	$\frac{1}{4}$ yard	1 bolt	1 bolt
H. Slate Digital Pine Cones Y4374-141	$\frac{2}{3}$ yard	1 bolt	2 bolts
I. Brown Digital Mushroom Tonal Y4376-15 (includes binding)	1 $\frac{1}{4}$ yards	1 bolt	2 bolts
J. Light Brown Digital Feathers Y4373-14	$\frac{5}{8}$ yard	1 bolt	1 bolt
K. Slate Digital Wreaths Y4370-141	1 $\frac{1}{2}$ yards	1 bolt	2 bolts
Backing: Light Blue Digital Animals Y4371-29	5 yards	4 bolts	7 bolts

Wildwood

by Beth Grove



Wild at Heart

By The Whimsical Workshop
 Designed by Matthew Pridemore
 60" x 80" • Order No. 0991
thewhimsicalworkshop.com



Designed for
 Wildwood!

11 Fabrics

A. 24" Digital Panel Y4369-55	¾ yard
B. Olive Digital Mushroom Tonal Y4376-24	¾ yard
C. Olive Digital Diagonal Plaid Y4372-24	¾ yard
D. Light Caramel Digital Mushroom Tonal Y4376-64	½ yard
E. Multi Digital Aspen Bark Y4375-55	1 yard
F. Slate Digital Mushroom Tonal Y4376-141	¼ yard
G. Slate Digital Diagonal Plaid Y4372-141	¼ yard
H. Slate Digital Pine Cones Y4374-141	¾ yard
I. Brown Digital Mushroom Tonal Y4376-15 (includes binding)	1 ¼ yards
J. Light Brown Digital Feathers Y4373-14	¾ yard
K. Slate Digital Wreaths Y4370-141	1 ½ yards
Suggested Backing: Light Blue Digital Animals Y4371-29	5 yards