

# Kindred Canines

by *Sue Bunch*



## A Cat or a Dog

By Gourmet Quilter  
Order No. GQHCORD  
gourmetquilter.com

Designed by Susan-Claire Mayfeld  
Dog Appliqué version shown  
38" x 46"

*Cat Appliqué version  
also included in pattern!*



### Fabrics:

	1 Kit	10 Kits	20 Kits
Fabric A, Background: Lt Cream LB Basic Dot Y2662-2M	¾ yd	1 bolt	1 bolt
Fabric B: Royal Blue Flutterbyes Y3709-31 (incl. binding)	yd	1 bolt	2 bolts
Fabrics C & G: Royal Blue Pictorial Stripe Y3705-31M*	1 yds	1 bolt	2 bolts
Fabric D: Royal Blue Paw Prints Y3711-31M	½ yd	1 bolt	1 bolt
Fabric E: Dk Aqua Flutterbyes Y3709-34	yd	1 bolt	1 bolt
Fabric F: Royal Blue Tossed Dogs Y3708-31M	yd	1 bolt	1 bolt
Fabric H: Lt Aqua LB Basic Wave Y1331-32SM	¼ yd	1 bolt	1 bolt
Backing: Royal Blue Watching You Y3706-31	3 yds	2 bolts	4 bolts

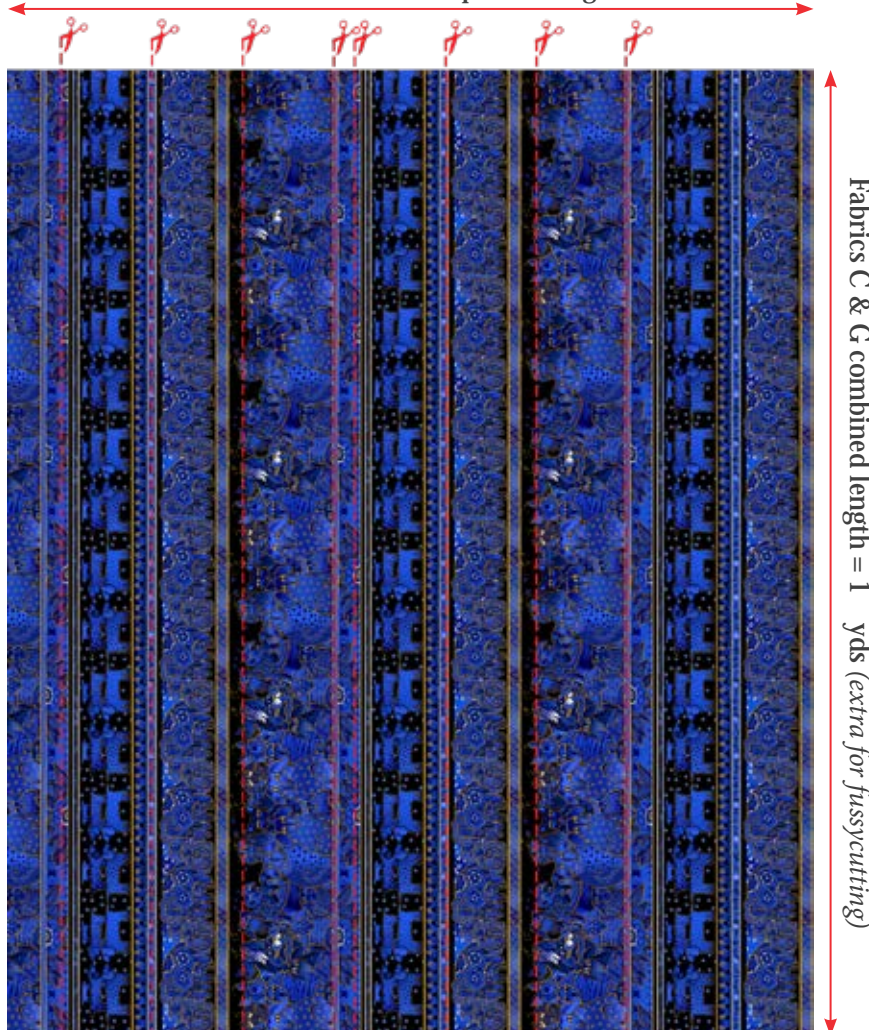
Add'l requirements: 36" wide paper backed fusible web for appliqué & Pigma Pen for Dog's eyes

\*Fabrics C & G: fussy cut LOF (differs from pattern). See clothworks.com for cutting diagram.

# Pictorial Stripe Cutting Diagram for A Cat or a Dog By Gourmet Quilter

Kindred Canines Royal Blue Pictorial Stripe Y3705-31M used in Fabrics C & G

Width of Fabric, 43" - 44" • Strips cut Length of Fabric



Fabrics C & G combined length = 1 yds (extra for fussy cutting)

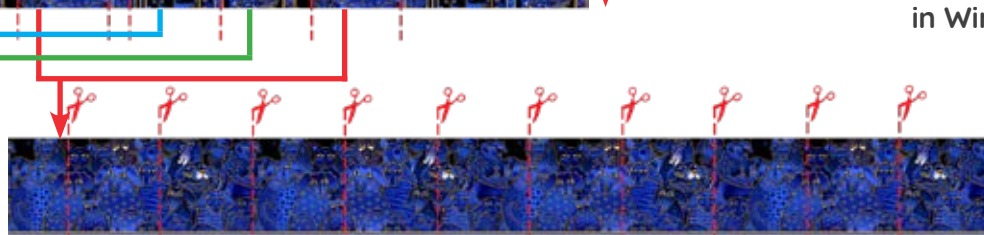


Dog Applique shown, 38" x 46"

Featuring fabrics from



for Clothworks delivering to shops in Winter 2022



Fabric C- Cut (2) 4 1/2" Strips of Packed Dog motifs, cut into a total of (12) 4 1/2" squares used for Borders 2, 4 & 6 Corners.



Fabric G- Cut (2) 4 1/2" Strips of Flower Dog motifs used for Top & Bottom of Border 6.



Fabric G- Cut (2) 4 1/2" Strips of Stacked Dog motifs used for Sides of Border 6.



A Cat or a Dog Pattern

Designed by Susan-Claire Mayfield

[gourmetquilter.com](http://gourmetquilter.com)

Order No. GQHCORD



