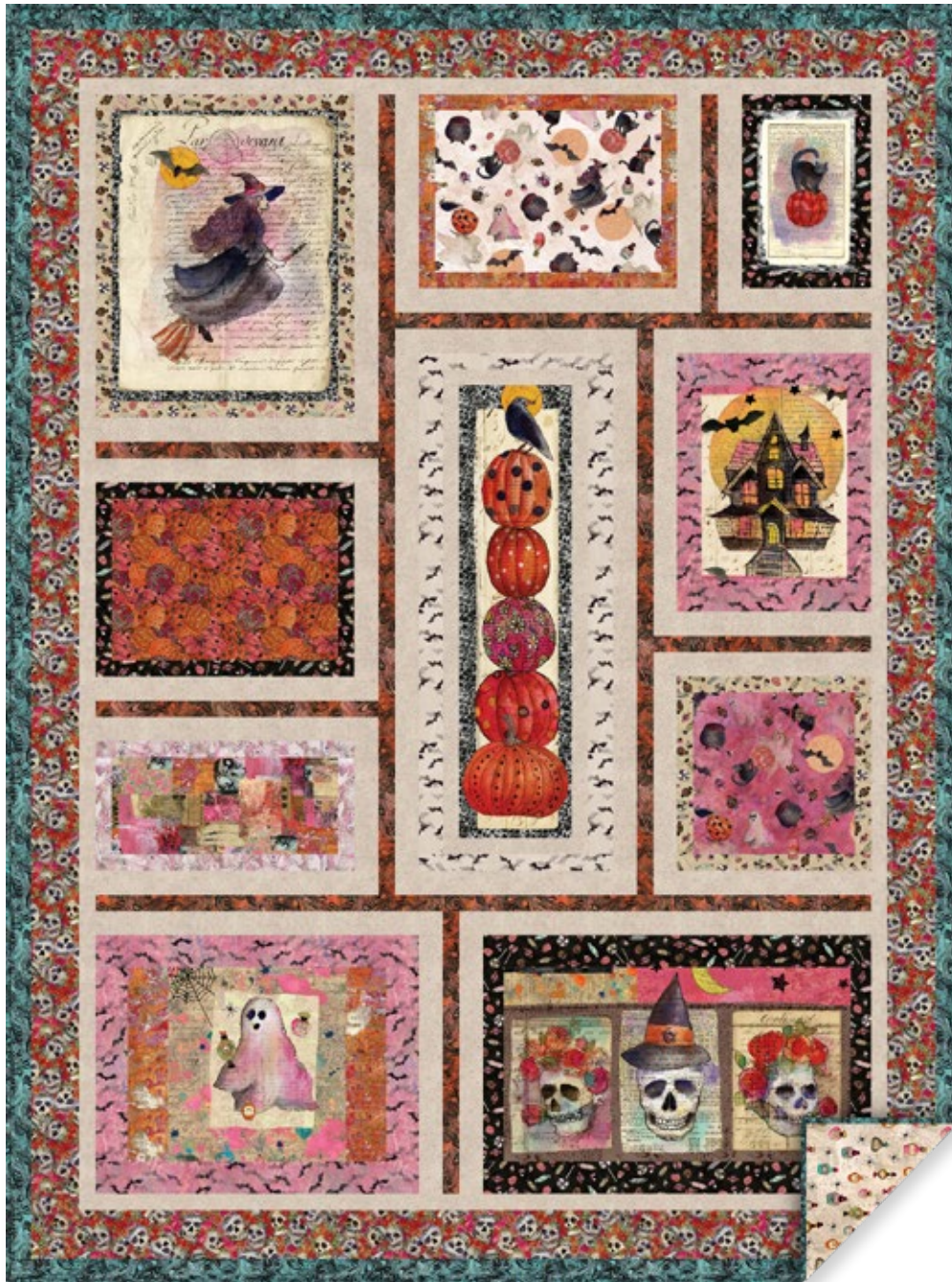


# FABOULOUS

by Sue Zipkin



## Wicked Charm

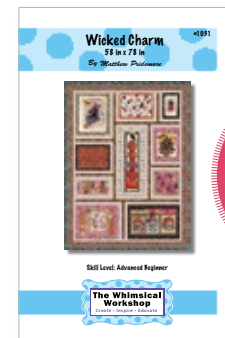
By The Whimsical Workshop

Designed by  
Matthew Pridemore

Order No. 1031

58" x 78"

[thewhimsicalworkshop.com](http://thewhimsicalworkshop.com)



NEW!

14 Fabrics	1 Kit	10 Kits	20 Kits		1 Kit	10 Kits	20 Kits
A. 36" Panel Y4472-55	1 yard	1 bolt	2 bolts	I. Light Fuchsia Ghosts Y4478-76	¼ yard	1 bolt	1 bolt
B. Light Caramel Candy Y4484-64	½ yard	1 bolt	1 bolt	J. Pale Peach Halloween Toss Y4473-131	⅜ yard	1 bolt	1 bolt
C. Black Candy Y4484-3	½ yard	1 bolt	1 bolt	K. Dark Raspberry Halloween Toss Y4473-75	⅜ yard	1 bolt	1 bolt
D. Light Khaki Spiderweb Y4485-11	1 ½ yards	1 bolt	2 bolts	L. Orange Marbling Y4482-36	⅝ yard	1 bolt	1 bolt
E. Raspberry Bats Y4483-74	⅜ yard	1 bolt	1 bolt	M. Multicolor Skulls Y4475-55	¾ yard	1 bolt	1 bolt
F. Multicolor Texture Y4481-55	½ yard	1 bolt	1 bolt	N. Teal Marbling Y4482-104 (includes binding)	1 yard	1 bolt	2 bolts
G. Orange Pumpkins Y4477-36	⅜ yard	1 bolt	1 bolt	Backing: Khaki Potions Y4476-12	5 yards	4 bolts	7 bolts
H. Multicolor Patchwork Y4474-55	¼ yard	1 bolt	1 bolt				